



BE WITCHED

Fabrics by Carol Eldridge



makower uk®

1384 Broadway
New York, NY 10018
(800) 223-5678

www.andoverfabrics.com

Quilt designed by Heidi Pridemore
Finished size: 63" x 75"

12/15/11

BE WITCHED

Fabrics by
Carol Eldridge

*Fabrics shown are 10% of
actual size. Fabrics used in
featured quilt pattern are
indicated in red*



5711-K ¾ yd – 1 panel



5713-G



5713-O ¼ yd



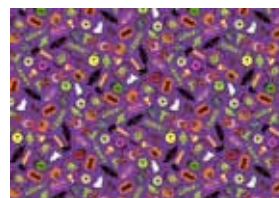
5713-K 1¼ yds* (extra yardage needed for backing)



5714-M



5714-O



5714-P



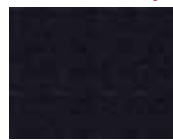
5714-K 1½ yds



1867-Y12 ⅞ yd
(includes binding)



1867-Y19 ¼ yd



1867-K1 ⅔ yds



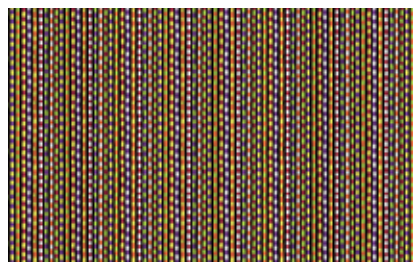
5712-M



5712-O 1 yd



5263-G 1 yd



5263-M

	Bolts needed to cut project kits		
	10 kits	20 kits	30 kits
5611-K	1	1	2
5714-K	2	3	3
1867-K1	1	1	2
5712-O	1	2	2
5263-G	1	2	2
5713-K*	1	2	3
5713-O	1	1	1
1867-Y19	1	1	1
1867-Y12	1	1	2
Backing Fabric			
*5713-K	3	6	8
*Yardage needed for backing (4 yds per kit)			